



MEACOCK & JONES

5 Bedrooms

House - Detached

Located in Hutton
Mount

£2,000,000



enquiries@meacockjones.co.uk

www.meacockjones.co.uk

01277 218485

21 Herington Grove Hutton Mount

Brentwood | | CM13 2NN



A very attractive five bedroom detached family home, situated just 0.2 miles from Shenfield mainline railway station and Crossrail terminus.

This appealing property has the benefit of an open plan kitchen/family room that overlooks the spacious south easterly garden, ideal for modern family life. The three reception rooms are generously proportioned and perfect for entertaining.

Upstairs the five very good size bedrooms are serviced by three well appointed bath/shower rooms. The main bathroom is luxuriously appointed with a bath and wide shower enclosure.

The rear garden has a southerly elevation and incorporates a heated swimming pool and pool house. The garden is planted with an attractive array of mature shrubs and plants and has a substantial terrace, very well suited to outside socialising.

The house is approached by a wide carriage driveway through electronically operated wrought iron gates and this provides access to the garage.

Offered to the market with no onward chain, this property is within easy reach of good local schools, such as St. Martin's and Brentwood.



21 Herington Grove

£2,000,000 Freehold

- Five Bedrooms
- Three Reception Rooms
- Utility Room
- Heated Swimming Pool
- 0.2 Miles From Shenfield Station
- Three Bath/Shower Rooms
- Open Plan Kitchen/Family Room
- Garage
- Spacious South Easterly Rear Garden
- No Onward Chain





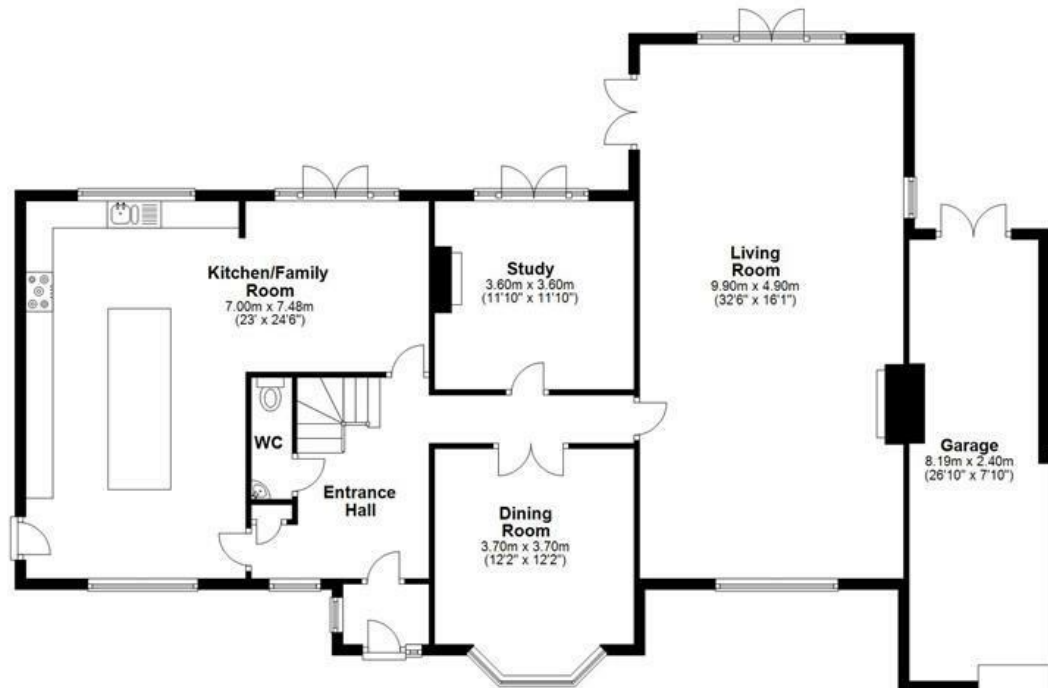
First Floor

Approx. 128.1 sq. metres (1378.6 sq. feet)



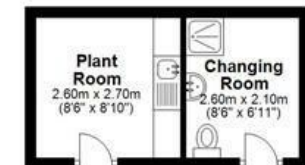
Ground Floor

Approx. 156.1 sq. metres (1680.2 sq. feet)



Outbuilding

Approx. 12.7 sq. metres (137.1 sq. feet)



Total area: approx. 296.9 sq. metres (3195.9 sq. feet)

Herington Grove

MEACOCK & JONES

106 Hutton Road
Shenfield
Essex
CM15 8NB

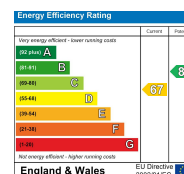
01277 218485

enquiries@meacockjones.co.uk

www.meacockjones.co.uk

Council Tax Band:

Local Authority:



Whilst care has been exercised in the preparation of these particulars, statements about the property must not be relied upon as representations or statements of fact. Prospective purchasers must make and rely upon their own enquiries and those of their professional representatives. All measurements, areas and distances given are approximate. We have not tested any apparatus, equipment, fixtures, fittings or services and so cannot verify they are in working order. Any fixtures or fittings detailed in these particulars are not necessarily included in the sale price and Meacock & Jones and their staff accept no liability for any errors contained therein.

ZOOPLA

rightmove

onTheMarket.com

The Property Ombudsman

tsj
APPROVED CODE
TRADING STANDARDS.GOV.UK

naea | propertymark
PROTECTED

